

Easy to Connect the Future

The Best LoRa Solution in GW Instek

Comprehensive LoRa measurement

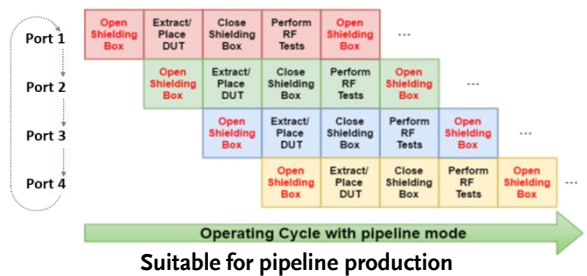


C-1200 is an One Box Tester that incorporates LoRa Tx and Rx tests. It provides spectrum analysis, time domain, FEI (Frequency Error Indicator), and TOA (Time On Air) for transmitter tests, and sensitivity, BER (Bit Error Rate), and PER (Packet Error Rate) for receiver tests. In addition to Sub-GHz, C-1200 also supports the 2.4 GHz bandwidth and the FSK signal test. Users can also edit the transmitted payload by themselves. When receiving data, the formats include binary, HEX, and ASCII code, which allow data transmission results to be easily confirmed.

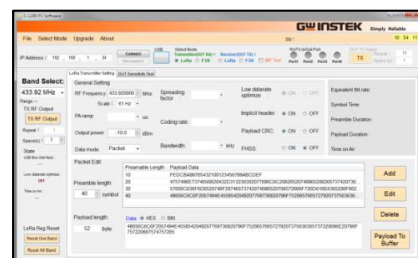
In addition to the signaling test of the finished product, C-1201 is a transfer box connecting C-1200 to LoRa module that directly controls the DUT to perform non-signaling tests on semi-finished products through UART/SPI/I²C interfaces.

Main Features:

- 4 half duplex TRX Ports (switching Type)
- Support LoRa/FSK modulation signals
- Support Sub-GHz and 2.4 GHz
- Complete PC Software and built-in MP Test function
- Built-in FCC 15.209/15.247 test regulations
- Built-in temperature control calibration signal
- Support SPI, UART, I²C interfaces to directly control DUT (Must collocate with IO Extension, C-1201)
- Simultaneously test DUT's current consumption (Must collocate with PPH-1503 DC power supply)

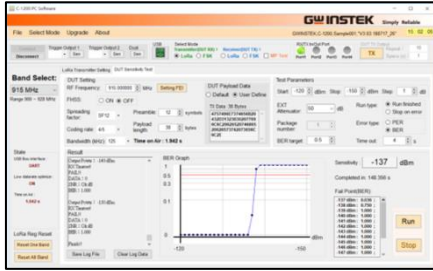


C-1201
I/O Extension

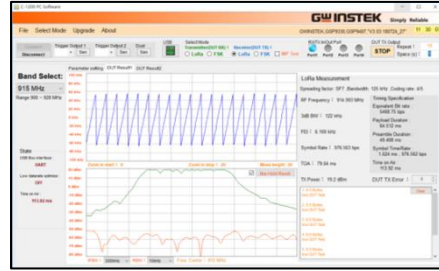


Provide PC software with a complete functionality

Provide PC software with a complete functionality



Transmitter - Sensitivity Test



Receiver - Result Display

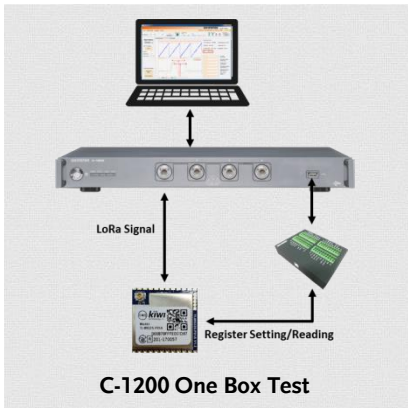


FEI Calibration



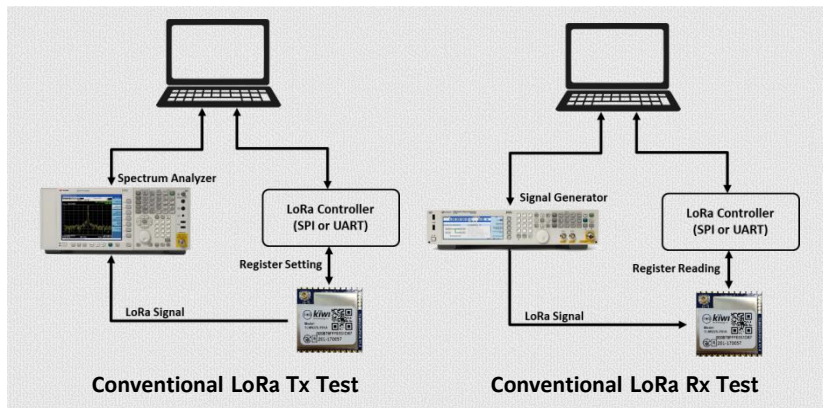
MP (Mass Production) Test

One Box Test vs. Conventional Test



C-1200 One Box Test

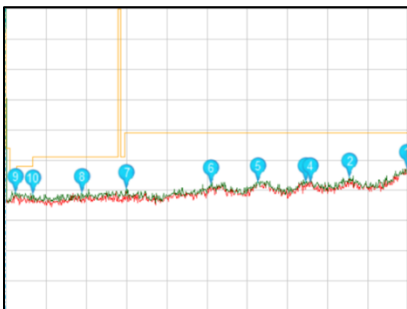
VS.



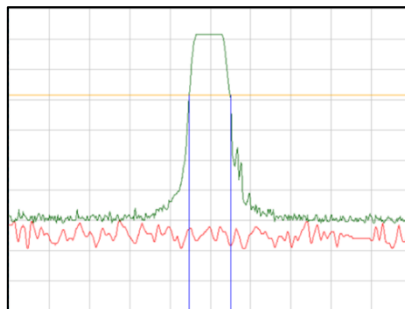
Conventional LoRa Tx Test

Conventional LoRa Rx Test

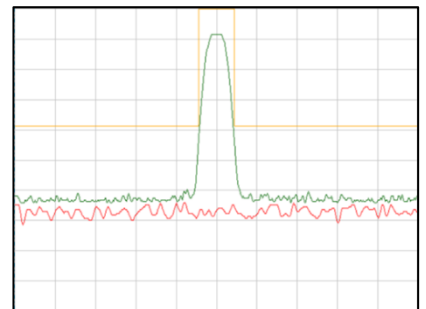
Support U.S. FCC 15.209/15.247



Emissions in Restricted Freq. Bands (§15.209)



20 dB Channel Bandwidth (§15.247)



Emissions in Non-Restricted Freq. Bands (§15.209)

GW Instek is an Adopter Member of LoRa Alliance™.

*LoRa Alliance™ and LoRaWAN™ are marks used under license from the LoRa Alliance™.

Global Headquarters
GOOD WILL INSTRUMENT CO., LTD.
 No.7-1, Jhongsing Road., Tucheng Dist., New Taipei City 236, Taiwan
 T:+886-2-2268-0389 F:+886-2-2268-0639

Contact Person
 Product Manager: Derek Hu / Derek_hu@goodwill.com.tw

GW INSTEK
 Simply Reliable



www.gwinstek.com

www.facebook.com/GWInstek

DSC1200-EN201903-1000